

Concrete Inspection

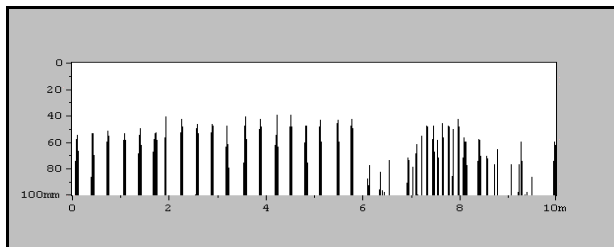
Reinforcement Image Analysis

As part of our comprehensive structural investigation service we offer the Ferroscan FS 10, a portable detection, measuring and mapping system which provides an immediate liquid crystal image of the reinforcement within a survey area.

Reinforcement mapping may be undertaken using either of two main modes of operation:

Quickscans

In the Quickscan mode, the data recorded includes the position and cover to reinforcing bars that cross the direction of the scan. Scans, can be of up to 30m in length.



Quickscan readout

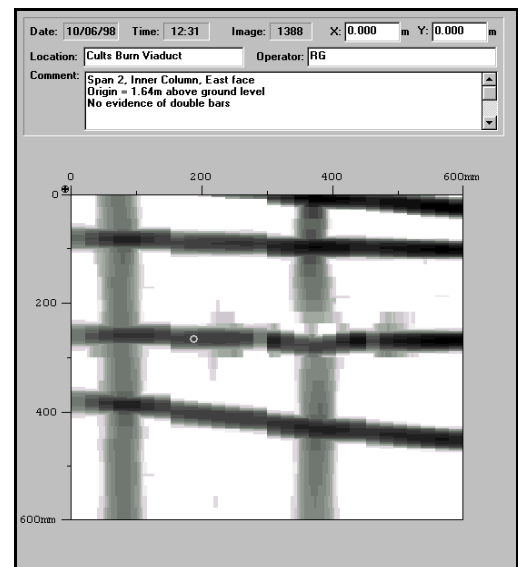
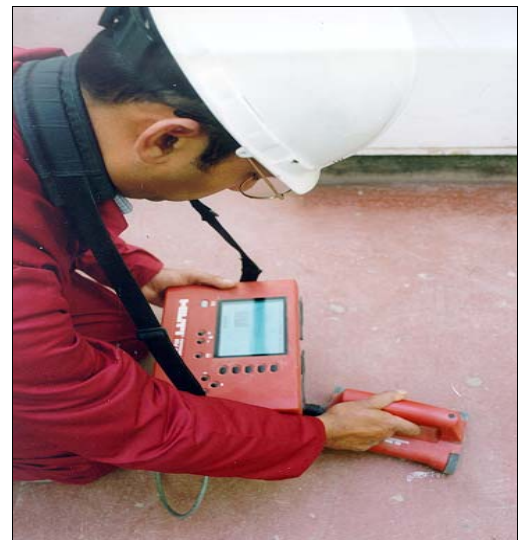
Image Scans

Image scans produce a full image of the reinforcement within the scanned area. The data gathered can be used to supply the following information:-

- arrangement and position of reinforcement
- depth of cover
- indicative bar diameter

The images may be evaluated by viewing transverse and longitudinal sections, layers at different depths or by producing statistical information.

All scanned data can be downloaded onto a personal computer for further analysis, interpretation and printed output.



Full image scan showing reinforcement positions